

Rab7-GTP

Catalog Number: 26923

Gene Symbol: RAB7

Description: Anti-Rab7-GTP Mouse Monoclonal Antibody

Background: Rab7 belongs to the Rab family of small GTPases. Rab7 is located in the late endosome, lysosome, cytoplasmic vesicle, phagosome and melanosome. It is involved in the late endocytic transport and contributes to the maturation of phagosomes.

Immunogen: Recombinant full-length protein of active Rab7

Tested Applications: IP, IHC, IF

Recommended Dilutions:

IP: 1 µg for 1~2 mg total cellular proteins

IHC, IF: 1:50-1:250

Concentration: 1 mg/ml

Host: Mouse

Clonality: Monoclonal

Isotype: IgG

Purity: Purified from ascites

Format: Liquid

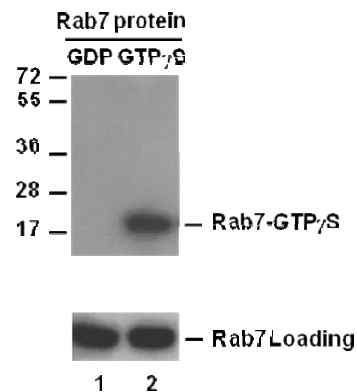
Preservative: No

Constituents: PBS (without Mg²⁺ and Ca²⁺), pH7.4, 150 mM NaCl, 50% glycerol

Species Reactivity: Anti-Rab7-GTP antibody recognizes only the active Rab7 proteins of vertebrates

Storage Conditions: Store at -20°C. Avoid repeated freezing and thawing

Immunoprecipitation/Western blot:



IP: anti-active Rab7 mAb

IB: anti-Rab7 pAb

Rab7 Activation Assay.

Purified full-length Rab7 proteins were immunoprecipitated after treated with GDP (lane 1) or GTP_γS (lane 2).

Immunoprecipitation was done with the anti-Rab7-GTP monoclonal antibody (Cat. # 26923). Immunoblot was with anti-Rab7 polyclonal antibody (Cat. # 21069).

FOR RESEARCH USE ONLY. NOT FOR DIAGNOSTIC APPLICATIONS